

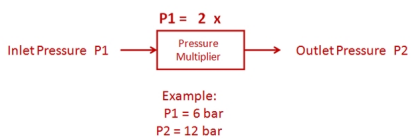
Pressure Multiplier

Tel: (63) 404 3782 / 83 Fax: (63) 404 3785 Email: inquiry@kfti.com.ph



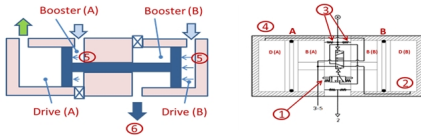
An automatic device for compress air to give an outlet pressure that is double the inlet pressure.

Used to locally intensify the input pressure at points of use.



Note: They are not suitable as a replacement for compressors, as wear on seals and drive pistons increases significantly during continuous operation without breaks.

How does it work?



Stage 1: Piston A hits 3/2 plunger and switches 5/2 Valve

Stage 2: P1 air enters Booster (A) and Drive (B) chamber

Stage 3: Exhaust Air in D (A) chamber leaves

Stage 4: Pressure from Booster (A) and Drive (B) are applied to the piston A and B

Stage 5: As the piston travels, air in Booster (B) is pushed to outlet

Stage 6: The cycle alternates when the piston B hits the 3/2 valve

- The pressure booster starts automatically when the supply pressure is applied and the desired output pressure has not yet been reached.
- When the set output pressure is reached, the pressure booster switches to energy-saving

mode but restarts automatically if the pressure drops during system operation.

- Fitted with check valve that maintains the outlet pressure when the supply of compressed air is switched off.
- Can be mounted on any position
- Advisable to install tank after booster to prevent fluctuating outlet pressure.
- It is recommended to connection of a 3/2-way on-off valve on the output pressure side of the pressure booster for safe venting of the residual pressure when it is not in used.
- Energy saving – reduce system pressure by installing pressure booster for specific application.



[Pressure Multiplier Brochure](#)